



Bush & Co.

# 184 High Street, Cambridge - £1,850 PCM

A well presented unfurnished three bedroom, semi detached house just a few minutes from many shops and amenities of Cherry Hinton High Street and with good access to Addenbrooke's Hospital, the City Centre, popular local schools and major road links including the A14 and M11.

## Entrance Hall

Entrance hall with stairs to first floor

## Kitchen - Dining Room

17'6" x 12'2" (5.34 x 3.71)

Modern fitted kitchen with gas cooker, slimline dishwasher, washing machine and large fridge freezer

plenty of space for dining table and chairs  
Back door

## Living room

17'6" x 11'2" (5.34 x 3.41)

Large living room leading to conservatory

## Conservatory

11'9" x 9'0" (3.60 x 2.75)

Sunny conservatory overlooking the rear garden

## Stairs and landing

With wardrobes

## Bedroom 1

17'6" x 11'5" (5.35 x 3.48)

Large front double bedroom with fitted wardrobes

## Bedroom 2

13'10" x 8'10" (4.23 x 2.70)

Double bedroom with fitted shelves and desk

## Bedroom 3

11'3" x 8'3" (3.43 x 2.54)

Smaller double bedroom with wardrobe and shelves

## Bathroom and Toilet

Bathroom with shower over the bath

Separate toilet

## Rear Garden

Enclosed rear garden mainly laid to lawn with a shed

## Front Driveway

Paved front driveway with parking for 4 vehicles

## Single Garage

Single garage with up and over door

## Key Information

EPC Rating – C

Council Tax Band – C

Rent – £1850 pcm (£426 pw)

Deposit – £2134

Available unfurnished now

Long term tenancy

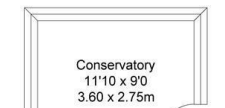
- Very spacious semi detached three bedroom house
- Gas central heating and double glazing
- Three good sized bedrooms
- Driveway parking for 4 cars
- Available to share groups of maximum 3
- Located in centre of Cherry Hinton village
- Sunny Conservatory
- Enclosed rear garden
- Single garage
- Regret no smoking

## IMPORTANT NOTICE

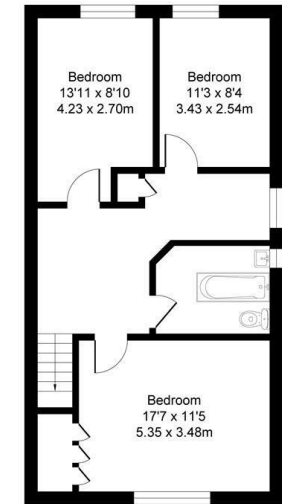
These particulars, whilst believed to be accurate are set out as a general outline only for guidance and do not constitute any part of an offer or contract. Intending tenants should not rely on them as statements of representation of fact, but must satisfy themselves by inspection or otherwise as to their accuracy. No person in this firm's employment has the authority to make or give any representation or warranty in respect of the property.



**Ground Floor**  
Area: 57.9 m<sup>2</sup> ... 623 ft<sup>2</sup>



**First Floor**  
Area: 61.5 m<sup>2</sup> ... 662 ft<sup>2</sup>



**Total Area: 119.4 m<sup>2</sup> ... 1285 ft<sup>2</sup>**  
All Measurements are approximate and for display purposes only

